



**NEWSLETTER**  
**FIRST CHURCH OF CHRIST IN SANDWICH**  
**UNITED CHURCH OF CHRIST**

Volume 44 Number 2

**Inside this issue**

Article	Pg
Friday Service	1
Annual Meeting One Service	1
Support Rev. Dan's Decision	1
Annual Meeting	2
Welcoming Statement	2
By-Laws	2
Thanks to Council	2
Staff Changes	3
Search Committee	4
Bible Verse	4
Christian Ed	5
Small Groups	6
Super Saturday	6
Thanks for Music Books	6
Outreach	7-8
Ron & Sarah Appreciation	9
Stewardship	10
Planned Giving	10
Lydia Lake Readings	10
Troubadours	11
Fair Projects	11
Prayer Chain	11
Peace Poem	11
Friends Notes	12
Prayers Needed	12
Pastoral Care	12
Mission Statement	12
Calendar	13

**New Friday Evening Service To Be Discussed February 11th**

Please join us on **February 11, 2011** at 5:30 pm downstairs in the vestry for a potluck supper, music, and prayerful conversation about a New Intergenerational Friday Evening Service. Sign-up on the bulletin board outside the office for the potluck. See Pastor Dan or Shelley Abreu for more information.

**Annual Meeting March 6th One Service Only**

The Annual Meeting will be held on March 6th. Please see the Call on page 2. There will be only one service on March 6th at 9:30 am.

**Face of A Child Program to Help the Poorest Orphans in Europe**

The Outreach Committee is initiating a new program to help orphans in Moldova, the poorest country in Europe. Please see page 6 for more information.



**Support Reverend Dan's Decision**

Recently, Dan sent a congregational letter outlining his plans for the future. In the letter he told us how difficult it was to make this decision because of the deep relationships that he has made with us over the past five years. Dan will be very much missed when he leaves.

So how do we respond to Dan's announcement?

From our standpoint, announcements like this bring sadness and joy at the same time. We are sad that Dan has decided that it is time for his calling to draw him away from First Church. We have joy that he will share his charisma, energy, friendship and spiritual guidance with a wider group of people than First Church.

More than anything, we need to respect his decision and place faith in Dan's determination that these steps will be good for him and his career development. We at First Church will continue forward along our faith journey strengthened by the love and warmth Dan has shared during the past five years.

February will be a month of decision making for Dan and our Congregation as we go through this time with him. I pray that we bring a high degree of fairness and love to our considerations with him and that we support him fully through this time of transition.

Dan has done a great job for First Church. We need to support his decision and also to celebrate his achievements!

Faithfully,  
*Charlie Ritch*, Moderator

## Call To The 2011 Annual Meeting

The First Church of Christ in Sandwich calls all members and associate members to the Annual Meeting to be held **Sunday, March 6, 2011** in the Sanctuary following the 9:30 am worship.

The purpose of the meeting is:

1. To hear all reports from pastors, officers and committees
2. To receive nominations and to elect officers and committee persons
3. To discuss financial/budgetary matters
4. To vote an operating budget for 2011
5. To hear and take action on a revision to the by-laws as provided to the membership two weeks in advance of this meeting
6. To hear and take action on a Welcoming Statement as provided to the membership
7. To act on any other business that may come before the meeting

*Mary Alice Stahleker, Clerk*

Note: The proposed Welcoming Statement is adjacent, while the proposed By-Laws are available on the church website: [www.firstchurchsandwich.org](http://www.firstchurchsandwich.org), as well as at the discussion meetings on **February 6th** and **February 27th**.

## Proposed By-Laws to be Reviewed

Meetings to review the proposed by-laws will be held after the 9:00 service on **February 6th**, and after the 11:00 service on **February 27th**. If you are interested in reading the proposed by-laws before the Annual Meeting, please try to attend. A copy of the proposed by-laws as well as a summary of the changes will be posted on the website: [www.firstchurchsandwich.org](http://www.firstchurchsandwich.org)

## Welcoming Statement Draft for First Church To Be Reviewed February 13th

“We are a warm and welcoming faith community open to all who wish to join with us in our faith journey. In the spirit of Christian love we affirm the dignity and worth of every person.

We offer each individual the opportunity to participate in every aspect of our church life and to share together the costs and joys of Christian fellowship regardless of their social or economic condition, race, ethnicity, physical or mental abilities, age, gender, marital status or family structure, sexual orientation, gender identity and expression, theological or political ideology.

As a Christian congregation we affirm that all people are created equal before God, that each individual is a child of God, and that we love one another as Christ has loved us.”

This is a draft Welcoming Statement which will be voted on at the Annual Meeting on March 6th. Meetings to review and discuss the statement will be held on **February 13th** after each service.

If you have any comments, please address to: Pastor Winston:  
patorwinston@firstchurchsandwich.org  
Pastor Dan:  
pastordan@firstchurchsandwich.org  
or Joe Butz : JButz@brunoeventteam.com  
or Steve Ross: srmtg@comcast.net .  
of the Deacons.

## Thanks to Church Council Members

On behalf of the congregation and Church Council, thank you to these members of the Council whose terms were completed in 2010:

**Rick Lawrence, Barbara Buchenan,  
Althea Brabazon, Laurie Ray,  
Ed Nadolny, Loren Burnett,  
Sue Spurling, Bonnie Marryat and  
Judy Froman.**

They have set a fine example of service, and we are most appreciative of their talents and the time spent on the work of First Church.

*Charlie Ritch*  
Moderator

## Pastoral Staff Changes Ahead

As we all know, First Church has experienced some major changes in staffing in recent months. Not only has Bill Geertz retired with Winston Baldwin joining us as an interim minister, we also have new choir directors and new sexton/maintenance personnel. All these changes have occurred fairly smoothly with most members hardly recognizing a change in the daily events at First Church. In many instances, favorable comments have been made about these changes as well as tremendous support from all of you in helping our new staff feel welcome and accepted. As we approach the selection of a new settled pastor along with the expected changes to our current staffing model, we hope that all First Church members will be open and accepting as we enter a new era at First Church.

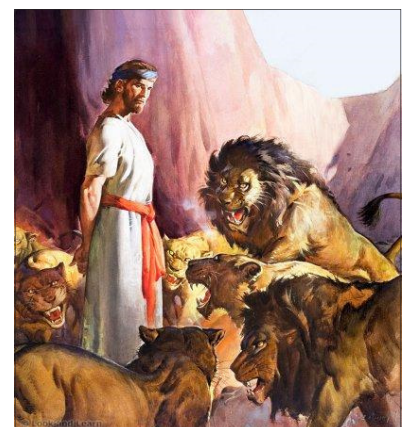
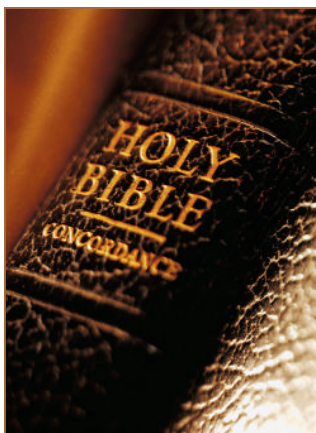
*We all recently received the news that Dan Spacek plans to seek a call elsewhere, and we recognize that many of us are saddened to see Dan leave. Most of us have been enlightened by our relationship with Dan. We have been blessed with his contributions, talents and dedication, but we recognize his need to move on and further his experience in his ministry. We wish him and Andrea well and hope to assist and support them in any way possible during this transition from our congregation to another.*

Winston has mentioned that the call letter for the new settled pastor would reference the Senior Pastor's job description. Negotiations between the new settled pastor, Personnel Committee, the Search Committee, Council, and Finance would all come together to complete the negotiated package. We are very optimistic about the incredible progress the search committee is making, and we look forward to welcoming our new settled pastor.

As surprising and cause for sadness as Dan's decision not to apply for First Church's Senior Pastor position is, the Personnel Committee believes that decision to be in his best interest and in the best interest of our congregation. *More often than not, when Associate Pastors apply for the Senior Pastor position within the same congregation it creates an awkward and potentially divisive situation. This is why the Office of Parish Life and Leadership of the United Church of Christ discourages Associate Pastors from applying for the Senior Pastor's position in the same congregation.*

We are optimistic for the future of First Church as well as we are for Dan and his bright future with another congregation. Please wish him well and continue to support him as he has supported us.

*Personnel Committee*



## Senior Pastor Search Committee Posts Church Profile



Since our senior pastor opening was posted in early January, profiles from interested candidates have been arriving almost daily, and your Search Committee has been busy reading! The discernment process is well under way, and selected candidates will receive a full copy of our church profile for their further consideration.

As we reported last month, our church profile is complete and is now available for members to read. You may peruse the copy in the church office or you may contact Mary Alice ([csmabs@comcast.net](mailto:csmabs@comcast.net)) to access it on the church website. Based on search guidelines, the profile is not generally published and is made available only on an individual access basis so that we are not inundated with resumes of unqualified applicants.

*...continued*

We have tried to present our church, the wider Sandwich/Cape Cod community and our position in a responsible and interesting way. We hope you agree!

As always, we hope you will speak with any one of us with any questions or concerns.

*Libby Fox, Judy Froman, Bill Hanson,  
Lisa Hassler, Clint Jones, Walley King,  
Art Lusty, Diane Ranney, Janis Wheeler,  
John Williams; Mary Alice Stahleker, Chair*

### Love One Another

But I say to you that if you are angry with a brother or sister, you will be liable to judgment; and if you insult a brother or sister, you will be liable to the council; and if you say, 'You fool,' you will be liable to the hell of fire.

So when you are offering your gift at the altar, if you remember that your brother or sister has something against you, leave your gift there before the altar and go; first be reconciled to your brother or sister, and then come and offer your gift.

*Matthew 5:23-24*



## Christian Education News

### Souper Bowl Sunday, February 6th 12:00-1:30

“Soup”er Bowl lunch – Our Middler, Junior & Senior High Youth Group(s) will serve our senior citizens/retirees soup & chili and then join together for a time of socializing and board games.



On “Soup”er Bowl Sunday our youth will also be collecting monetary contributions at the end of each service to donate to the Bourne & Sandwich Food Pantries.

### MACUCC - Super Saturday!

Start date: Saturday, March 05, 2011  
Start time: 8:00 am End time: 3:00 pm  
Ludlow High School,  
500 Chapin St., Ludlow, MA

Hand to Hand/Heart to Heart:  
School Kits and Paths of Justice

A Super Saturday Gathering for YOUth and youth leaders - the youth gathering will run simultaneously to the wider Super Saturday event. Open to UCC youth in 7-12th grades.

Join us for music, storytelling, thinking, praying, playing, and putting our faith into action. *continued*

In the morning session we’ll tackle why we are called to take action and help our neighbors all over the world. In the afternoon session we’ll focus more on the wider issue of justice. Throughout the day, there will be music and storytelling, as well as time for personal and shared reflections. Together, we will assemble school kits for Church World Service.

Our time together will feature The Rev. Bert Marshall, a UCC pastor and the New England Director for Church World Service ([www.churchworldservice.org](http://www.churchworldservice.org)).

For additional information, visit: <http://www.macucc.org/pages/detail/2174>

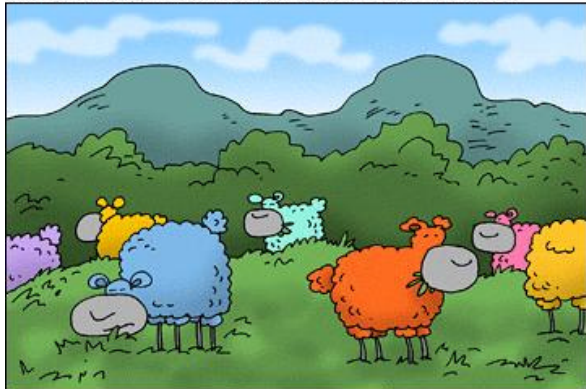
To register online: <http://www.macucc.org/registrations/register/24>

*If interested in attending, please be in touch with Nancy Lawrence, CE Director*

### Church School: March 6<sup>th</sup> One Service at 9:30

Please note Church School will be held at 9:30. Also, child care will be provided during the Annual Meeting which will immediately follow the 9:30 service/church school.

REVERENDFUN.COM COPYRIGHT BIBLE GATEWAY



Thanks to Richard Germain (See Genesis 37:3-36) 09-13-2010  
**WHERE JOSEPH'S COAT CAME FROM**



It is easy to love the people far away.  
It is not always easy to love those close to us...

Bring love into your home, for this is where our love for each other must start.

*Mother Teresa*

## ❄ Small Group Ministries ❄

### Jubilee meets February 1st

Jubilee meets on Tuesday, Feb. 1<sup>st</sup> 7:00 pm in the Godly Play room. We will be discussing *Cutting for Stone* by Abraham Verghese. Pam Ritch will share the results of our group survey & we will select our next book(s).

*Nancy Lawrence*

### Church Circle Meets February 24th

Circle will meet Thursday, February 24 at noon. Our featured speaker will be Chef John from Roche Bros. He'll share many gourmet tips (and goodies) for a fun-filled get-together. Bring your sandwich, as usual.

*Barbara Kashar*

### Church Women United of Cape Cod

Church Women United of Cape Cod will hold their annual Human Rights Celebration on Friday, **February 11th**, at Our Lady of Victory Church in Centerville. The program will begin with brunch at 10:00 am, followed by the presentation of awards.

This year's honorees are Claire Goyer, former Director of the Duffy Center; Françoise and Edouard Rocher, active in Pax Christi and other outreach projects; Jill A. Scalise, a member of the Cape Cod Council of Churches with emphasis on Nights of Hospitality and a member of the Mission and Outreach Committee of Brewster Baptist Church; and Dr. Kathleen Schatzberg, President of Cape Cod Community College and supporter of many human rights causes.

Reservations for this event may be made with Bev Hammel, [mmachh@verizon.net](mailto:mmachh@verizon.net). There is a \$10 reservation fee to cover the cost of the brunch and program.

## Come to Super Saturday March 5th

8 am - 3 pm  
Ludlow High School  
500 Chapin St., Ludlow, MA

Join hundreds of delegates, pastors and lay leaders from all over the Conference for our Second Super Saturday – a full day of workshops and networking around best practices for church leaders.

With 35 new and repeat workshops and worship featuring several provocative Conference pastors, this day will have something for everyone in your church - educators, mission committee members, clergy, deacons, treasurers and others - so we hope you'll gather a team and make your way to Ludlow! Workshops sizes are limited and will be assigned on a first-come first-serve basis, so please **register early**.

To view the brochure of workshops:

[http://macucc.s3.amazonaws.com/F4061ACB6F8142B2BC51766DFBD19DF8\\_super-sat-march-brochure.pdf](http://macucc.s3.amazonaws.com/F4061ACB6F8142B2BC51766DFBD19DF8_super-sat-march-brochure.pdf)

For registration, or more information :

<http://macucc.org/events/detail/96>



## Thanks for New Supplement Song Books

A huge Thank You to the following:

**Reverend Geertz** and his Farewell Dinner proceeds;  
to **Audrey Jones** and the **Warren Jones Memorial Fund**;  
to **Aggie Rosander** and the **Russ Rosander Memorial Fund**; and  
to the **Eleanor Mancusi Memorial Fund** for donating the money to pay for the new supplement to the Chalice Hymnal. A special thank you to **Sue and Dan Spurling**, who paid for the shipping.

*Music Committee*



## Your Outreach Corner

### Little Samaritan Mission

The outreach committee would like to introduce a mission to Moldova called ***Face of a Child***.

Moldova is the poorest country in Europe. It has about 60 orphanages. The *Face of a Child* mission is a wonderful opportunity to reach out to orphans and provide each child with a list of much needed items.

Here is how the program works:

Once you decide to sponsor a child, you will be given a photo of a child from the Nisporeni orphanage in Moldova. You will have until mid-April to purchase the items on your list. (This will give you some time to find some bargains.) Items include a coat, gloves, hat, scarf, some school supplies and some hygiene supplies. The items are then put in a large Zip Lock type bag or back pack and the child's photo is attached. Along with that is a donation of \$10.00 to cover shipping, a Bible and a meal for the child. *...continued*



Moldova is a land-locked country between Ukraine and Romania.

The packages are then collected by the Outreach Committee and distributed to Little Samaritan for shipment to Moldova.

This is a once a year event; the child you sponsor receives the gift you send. If you wish to sponsor again next year, you may request the same child.

Anyone interested in helping out the children will be able to pick up their sponsored child's picture after the 9 am or 11 am on **February 13th** church service in the vestry. You may contact Lois Fluegel at [loflu88@comcast.net](mailto:loflu88@comcast.net) with any questions or to request a child if you are unable to attend church that day.

LSM is Little Samaritan Mission, a non-profit organization that runs the program. There is a radio station run by LSM which is a Christian radio station that broadcasts to Romania and Moldova. LSM is in their tenth year of *Face of a Child*. There are also videos (about 5-10 minutes long) that can be made available to anyone who wishes to see more. More information is available on their website:

[http://www.lsmglobal.org/index\\_humanitarian.php?mid=4](http://www.lsmglobal.org/index_humanitarian.php?mid=4)

### Have an Extra Computer Monitor?

**Homeless Not Hopeless** is in need of a computer monitor. If you have a spare one please call Diane at 508-685-3474 to make arrangements or email her at

[dkaufman@homelesnothopeless.org](mailto:dkaufman@homelesnothopeless.org)



**Your Outreach Corner**

**Thank you to :**

- All who contributed to The Christmas Fund during December. We raised \$3,125 to help retired clergy in need.
- Judy Coppola, Dolores Westfield, Barbara Shaner, Karen Scribner, Sherrill Rutty, and Joan Chase who helped prepare and paint a wall at the Champ House. This included stripping wallpaper!! Cheryl Hempen contributed snacks on Friday.
- Judy Coppola for arranging the work days and assisting with food for the Women's Build for Habitat during two Saturdays in January.
- Bev Arbo for coordinating the Equal Exchange Coffee Project- which she will continue to manage in 2011
- To the "retiring" Outreach members for 2010: Judy Coppola, Bev Arbo, Peggy McEvoy, and Shirley Lamson. All of their contributions to mission and the church are very much appreciated.
- Thank you to continuing members:  
Pat Marshall, Pat Galloway, Janet Cusolito (secretary), Janis Wheeler and Cheryl Hempen, co chair. Judy Coppola will continue in a volunteer capacity.
- Welcome to the new Outreach committee members pictured below:  
Connie Larrabee, Susan Anderson, Betty Harris, Courtney Craig, Co Chair, and Pam Carmichael (not pictured).



Dolores Westfield, Karen Scribner, Barbara Shaner, and Judy Coppola, who helped prepare and paint a wall at the Champ House.

Not pictured: Sherrill Rutty, Joan Chase, and Cheryl Hempen.



Judy Coppola at the Women's Build in Mashpee for Habitat For Humanity, along with the new owner and two carpenters putting in the bedroom flooring. Outreach provided help and lunch for the day.





## Appreciation for Ron and Sarah

On behalf of the Music Committee I wish to say just one thing. WOW!! I wish to express our deepest appreciation to Sarah and Ron for their efforts and talents. **“WE GIVE YOU THANKS!”**

The past six months have been challenging, exciting and absolutely wonderful. Our Bell Choirs are enthusiastic, full of joyous anticipation and spirit. Sarah’s new Youth Choir appears to be expanding monthly. Most importantly, the youth as well as the parents/congregation are responding positively to Sarah’s warmth and musical gifts. **“WE GIVE YOU THANKS!”**

The Spirit Singers and The First Church Choir are experiencing something new and are reaping the benefits weekly. The choirs are experiencing tremendous musical development and growth due to the fact that they now have a Chorale Director and an accompanist who embodies the same talent, and on behalf of the Music Committee let me say one thing! . The two of them are truly a blessing to First Church. **“WE GIVE YOU THANKS!”**

The Praise Band is experiencing some changes as the need for a new drummer was met and several new guitarists offered their talents each Sunday at worship. (The new band members are from our youth population).

Sarah and Ron have brought to our Church Family immeasurable talent, the ability to encourage each and every choir member to reach to expand their ability to utilize their own personal instrument, their voice, resulting in growth, improved quality of technique and sound, the feeling of accomplishment. Presently Sarah and Ron bless our church with openness, a sincerity that is felt by all and most importantly their commitment to the Music Ministry at First Church. **“WE GIVE YOU THANKS!”**

New members are encouraged and welcomed to join one of the choirs or all of the choirs. The choice is yours and the fun is contagious.

Once more I say WOW!! For it is very exciting to realize and acknowledge that our new Musical Directors are the first permanent change that The First Church of Christ in Sandwich is experiencing as it continues on its journey through transition and change. The change is positive, overflowing with endless possibilities and blessed with God’s Grace. **“WE GIVE YOU THANKS!”**

*Cheryl Craig, Chair*





## Stewardship Update 2011 Annual Campaign

The Stewardship Committee is pleased to report that the initial response to the 2011 Annual Stewardship Campaign has been very positive. As of today, 90% of our 2010 pledges have been renewed. The average increase of these pledges is 12%. And, we have pledges from 24 new families, who have contributed \$23,000. **We have met 93% of our goal!** This is very encouraging news, but our target has not yet been reached. *We are currently \$19,000 short.*

**28 families who pledged in 2010 have not yet renewed their commitment for 2011.** And, we are short of our goal for first-time pledges.

If you are among those who have made your pledge, thank you for your commitment. *If you have not yet sent in your card, won't you do so today?* The Finance Committee is working to finalize the 2011 church budget. We hope that they will be able to count your pledge in their plans. The jug is nearly full. Please help us ensure that it reaches the top.

The Stewardship Committee  
*Kim Butz, Chuck Galloway,  
Merle Harris, Gene Schott*

## Upcoming *Planned Giving* Programs

The Planned Giving Committee met on January 10<sup>th</sup> and agreed to start preparations for a series of small group educational meetings for interested members and friends of the Church. You can sign up to participate as dates and plans are announced. Topics under consideration include the following:

**Estate Planning 101:** How does property pass at death? Which of your assets are governed by a Will and which are not? Why you still need a Will even if all of your property will pass outside your Will?

**Increasing Your Retirement Income:** Gift annuities are a little-known and underappreciated means to substantially increase income during your lifetime. Using material from the Mass. Conference, we will share specific examples of how this I.R.S. approved life income gift works.

**Should the Church involve itself in people's finances?** Planned Giving aims to help people be faithful stewards, because all we are and all we have been given is a trust from God.

**Understanding the Church's Endowment:** With input from the Finance Committee and the Treasurer, we will review existing endowment funds, policies and restrictions, and discuss how to receive, invest and use new gifts.

---

## Subscribe to Lydia Lake's Readings

The Wednesday Prayer Group meets Wednesdays from 11 to 12 am. The group explores good news in the world. We pray together our concerns and joys, and share with each other events in our lives. We then contemplate a meditational text.

The group was started more than six years ago by Judith Page and the Rev. Dale Thackeray, and began with selections from a book of Mother Theresa's reflections, *Everything Starts from Prayer*.

The readings are currently provided by **Dr. Lydia Kirsopp Lake** of *Still Waters Arts & Services* (Lydia taught a few Bible and other classes at First Church before moving to the Berkshires). To subscribe to the readings, send your email or postal address to Laurie Ray at [Spire@firstchurchsandwich.org](mailto:Spire@firstchurchsandwich.org). A sample of Lydia's readings is available in the sanctuary, or you may also email Laurie Ray for a sample. All are welcome to attend the Prayer Group meetings every Wednesday at 11:00 am.

*Laurie Ray*

## Troubadours Continue Visits



In January, the First Church Troubadours were “on the road” to sing for church members Kay Wilhelm and Marion Neill at their homes, and the group is planning upcoming visits to shut-in friends in February and March. Our visits are usually scheduled for the third Monday evening of the month.

New members to the group are always welcome; we do not hold rehearsals, nor take attendance! The only talents required are happy smiles, the love of singing, and enjoying the chance to bring the music and fellowship to members and friends of the friends who are home-bound or in a care facility and can only infrequently attend church services. Many of our “audience” know by heart the hymns that they heard in church in their youth, and appreciate the memories evoked by hearing them sung again. We encourage “sing-a-longs,” further enhancing a sense of fellowship for the recipients.

Generally we meet at the church and carpool to our evening’s destination. Thanks to the talents of Music Committee member **Melissa Lotter**, the Troubadours now have their own music folders to accompany us on our mission.

If you know of someone who would appreciate a visit and a time for song, or for further information about Troubadours, contact Carolyn Meigs-Turkstra at 508-888-0556, or email at [matriarcht@hotmail.com](mailto:matriarcht@hotmail.com)



## Join the Prayer Chain

First Church has a prayer chain transmitted by emails to pray for individuals on request. If you would like to be on the list, please send an email to me at [cloverridge@comcast.net](mailto:cloverridge@comcast.net), and I will add you to the listing. Anyone who has a prayer request may contact me, or call the church office at 888-0434.

Laurie Ray

## Fair Projects

If anyone is looking for a winter project to do now for next November's fair, go to [www.lionbrand.com](http://www.lionbrand.com). You will find free patterns to knit or crochet. Lots of ideas!!!!



## Peace

Where is it to be found  
if not some quiet place  
away from the torrid pace  
as the world spins around

A small shaded garden  
a stand of birch by a rocky stream  
apart from all that is banal and mean  
where our hearts fail to harden

Yes fleeting is this kind of shelter  
our peace must reside in the human mind  
regardless how tough each day's grind  
amidst life's constant helter-skelter

Yet quiet places are there for a reason  
*to everything there is a season*

By Bud Lamson from  
*Looking Back While Pushing On*



## Notes from Friends



We offer our sincere thanks and gratitude to all our wonderful church friends who have so kindly sent prayers and words of support with George's recent heart surgery. Although it will be a long, slow road to full recovery, he is truly encouraged and uplifted with everyone's incredible thoughtfulness.

Fondly,  
*Jan & George Kasper*



### Pastoral Care

*If you or your family member are going to be hospitalized or are facing other crises, please call Winston or Dan that they may offer pastoral care.*

### Please Keep These Friends in Your Prayers

Chuck Scribner, George Watson, Brad Anderson, Ann Anderson, and Jeff, brother of Susan Anderson

Also: Brandon Ellison, Jeff Bromley, Nick Giammarco, and Will Lathan serving our country abroad.

Please call the church office to add people to the prayer list.



### Our Mission Statement

We live our mission as a welcoming community, celebrating God's love in the Good News of Jesus Christ. We serve the individual, the church, and our world through creative worship, spiritual growth, and nurturing fellowship.

### Our Vision Statement

***where we endeavor to be in five years***

Building on a heritage that embraces social action, we are known as a community church where all are welcome. By the generous gifts of our growing membership our church is a catalyst for spiritual development through a variety of innovative worship and educational experiences.

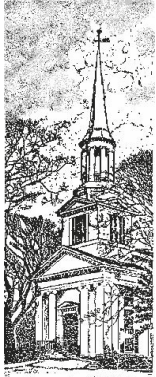
Recognizing our diversity, we nurture and care for each other. Our children grow into lifelong Christians through programs that develop a living relationship with Jesus Christ. Our spiritual presence mirrors our physical presence in our town and the wider community. No matter where we are on life's journey, we are united by the common goal of moving closer to our God.



# February 2011



Sun	Mon	Tue	Wed	Thu	Fri	Sat
		1 <i>5 R. Ringers 6 Drama 7 Search 7 Jubilee 7:30 AA</i>	2 <i>9:30 Exercise 11 Prayer Grp 12 Bible Study 4:30 Jr Choir 5 Praise Band 5:30 S. Singers 7 IG Bells 7:30 FC Choir</i>	3 <i>12:45 Visitors 2 Cape Heritage 6 Cub Scouts 6:30 Yoga</i>	4 <i>9:30 Exercise</i>	5
6 <i>9 Worship/CS/CC 10 Social Hour 11 Worship/CC 12 Social Hour 12 Soup Lunch 1:30 Gardeners 2 Confirmation</i>	7 <i>9:30 Exercise 9:30 Prayer Shawl 6 FC Bells 6 God &amp; Family 6 FC Handbells 7:30 CC Chorale 7:30 AA</i>	8 <i>5 R. Ringers 6 Drama 7 Search 7 Trustees 7:30 AA</i>	9 <i>9:30 Exercise 11 Prayer Grp 12 Bible Study 4:30 Jr Choir 5 Praise Band 5:30 S. Singers 7 Finance, CE Outreach 7 IG Bells 7:30 FC Choir</i>	10 <i>6 Cub Scouts 6:30 Yoga</i>	11 <i>9:30 Exercise  5:30 Evening Service &amp; Potluck</i>	12
13 <i>9 Worship/CS/CC 10 Social Hour 11 Worship/CC 12 Social Hour 5:30 Confirmation</i>	14 <i>9:30 Exercise 6 God &amp; Family 7:30 CC Chorale 7:30 AA</i>	15 <i>5 R. Ringers 6 Drama 7 Search 7:30 AA</i>	16 <i>9:30 Exercise 11 Prayer Grp 12 Bible Study 4:30 Jr Choir 5 Praise Band 5:30 S. Singers 7 IG Bells</i>	17 <i>6 Cub Scouts 6 FC Handbells 6:30 Yoga 7 FC Choir</i>	18 <i>9:30 Exercise</i>	19
20 <i>9 Worship//CC No GP/ 1 Rm School 10 Social Hour 11 Worship/CC 12 Social Hour</i>	21 <b><u>SCHOOL &gt;&gt;&gt;</u></b> <i>9:30 Exercise 9:30 Prayer Shawl 7:30 CC Chorale 7:30 AA</i>	22 <b><u>VACATION</u></b> <i>7 Search 7:30 AA</i>	23 <b><u>WEEK&gt;&gt;&gt;</u></b> <i>9:30 Exercise 11 Prayer Grp 12 Bible Study 5 Praise Band 5:30 S. Singers 7 IG Bells</i>	24 <i>12 Circle 6 FC Handbells 6:30 Yoga 7 FC Choir</i>	25 <i>9:30 Exercise</i>	26
27 <i>9 Worship/CS/CC 10 Social Hour 11 Worship/CC 12 Social Hour</i>	28 <i>9:30 Exercise 6 God &amp; Family 7:30 CC Chorale 7:30 AA</i>					



FIRST CHURCH OF CHRIST  
PO BOX 810  
SANDWICH MA 02563

NON-PROFIT ORG  
PERMIT NO. 3  
US POSTAGE PAID  
SANDWICH MA

ADDRESS SERVICE REQUESTED



Organized 1638

**FIRST CHURCH OF CHRIST**

**PO Box 810**

**136 Main Street**

**Sandwich, Mass.**

Phone: 508-888-0434

E-mail: [sanducc@firstchurchsandwich.org](mailto:sanducc@firstchurchsandwich.org)

Website: [www.FirstChurchSandwich.org](http://www.FirstChurchSandwich.org)



**Presidents' Day**  
**February 21, 2011**

**Spire by Email**

When you subscribe to the Spire by email, you receive it in advance of the printed version and see it in full color, in very large print, with photos. If you have a slow connection, you may save it on your computer and read it later at your leisure.

To subscribe to the email version as well as the printed version, please send an email to:

[Spire@firstchurchsandwich.org](mailto:Spire@firstchurchsandwich.org) with the Subject: "Subscribe" and please type your name in the email.

To subscribe to the email version only, saving money as well as trees, please send an email to

[Spire@firstchurchsandwich.org](mailto:Spire@firstchurchsandwich.org) with the Subject "Email Spire Only", type your name in the body of the email and send.

Laurie Ray Editor